



Butterfly



Farmhouse

Two-Story Alley Load Duplex

From the *Modern American Classics Collection*

Say goodbye to costly home and yard maintenance without sacrificing an ounce of style or comfort in these contemporary easy living duplexes featuring three levels of finished living space. Your living, dining, and cooking areas feel spacious and open thanks to huge windows and 10-ft main floor ceilings. The fluid floor plan, kitchen island, and sliding glass doors to the trellised patio create the perfect set-up for casual entertaining, indoors or out. The finished lower level features a 3rd bedroom for flex space, guests, or home office, 3rd full bath, and a rec room.

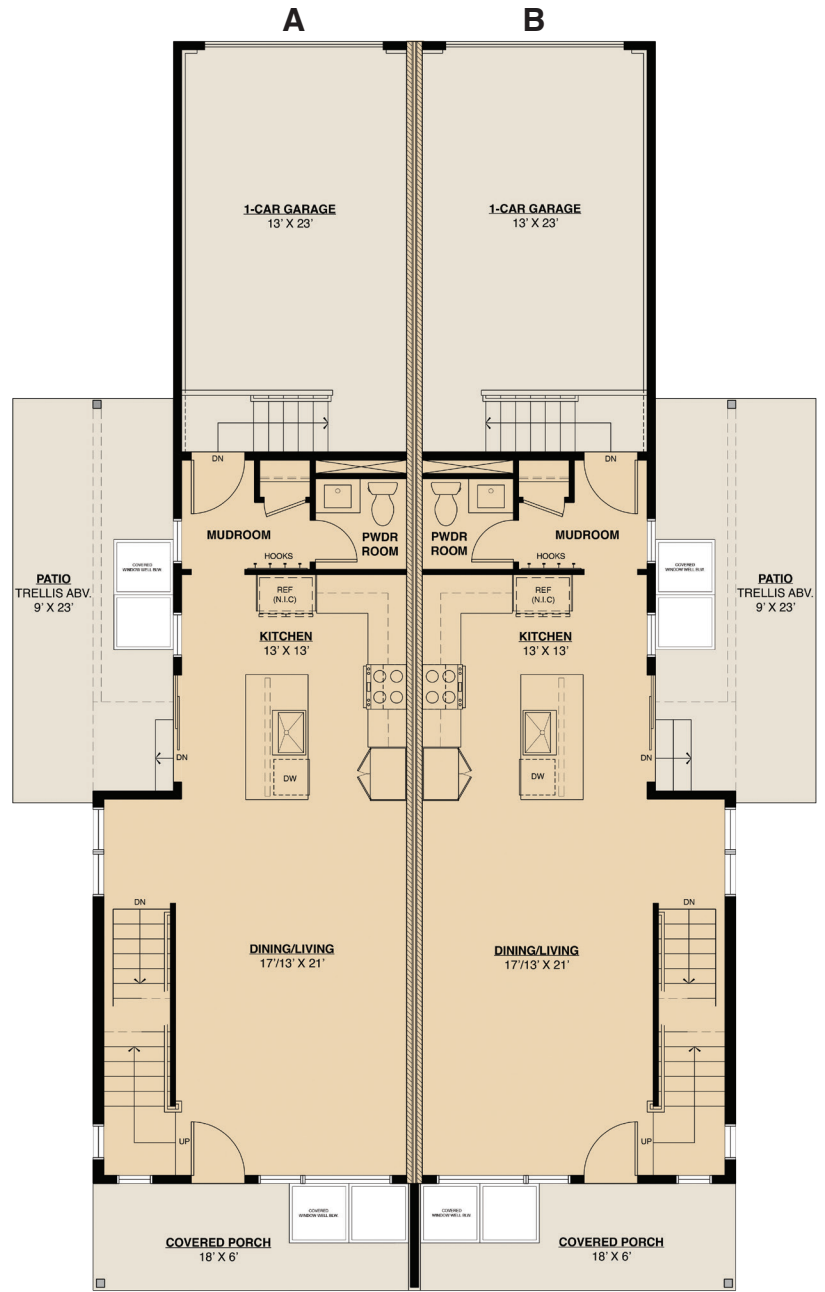
- No upgrades needed! Enjoy durable 8" wide engineered flooring, Navian® tankless water heater and a Honeywell® smart thermostat
- Stylish kitchen features Kitchen Craft® cabinets with soft-close doors and drawers, Whirlpool® stainless steel gas range, microwave and dishwasher, quartz tops, and single-bowl under-mount sink
- Keep keys, coats, and footwear organized in the mudroom, with the coat closet and wall hooks
- Vaulted west-facing owner's suite with large windows overlooking the park, four-piece bath with dual-sink vanity, spacious shower and private toilet, and walk-in closet
- Energy Star® certification means greater comfort, cleaner indoor air, long-lasting durability, and energy and water cost savings
- Attached single-car garage on the main level with an additional dedicated parking pad for a second vehicle.



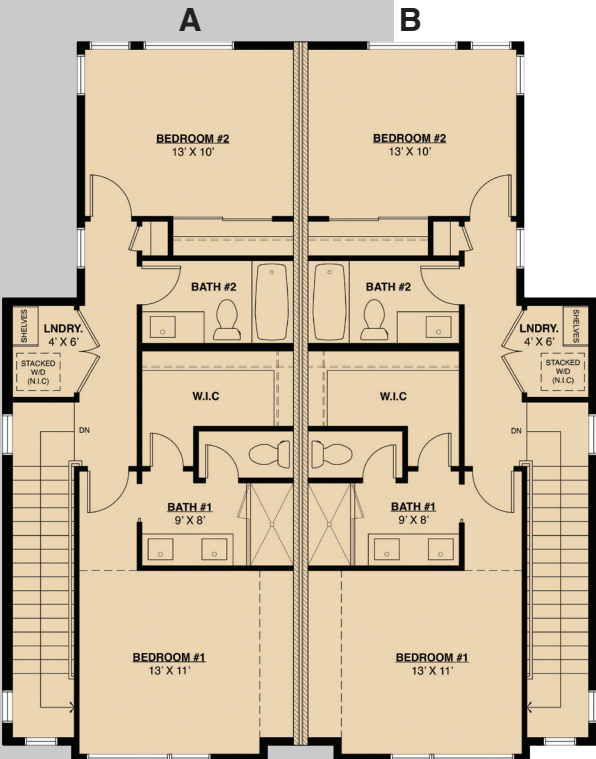
Marlita Lazo
Sales Manager
marlita@markelhomes.com
303.651.9565



Lower Level
8 ft 9" ceilings



Main Level
10-ft ceilings



Upper Level
9-ft ceilings

2-Story Alley Load Duplex

Main Level	653sf
Upper Level	617sf
Lower Level	509sf
Total Finished	1,779sf
Unfinished Lower Level	77sf
Total	1,856sf
Garage	311sf

We reserve the right to modify or change plans, specifications, features and prices without notice. Renderings are artist's concepts. Window size & location may vary per elevation style.

