



## 2000 OASIS

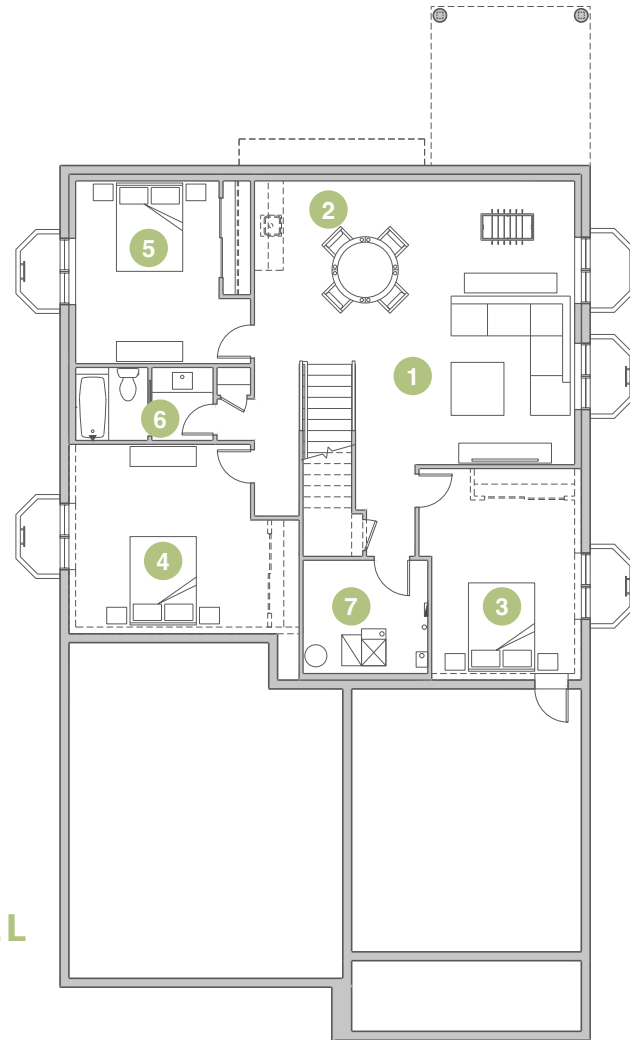
Mid Century Modern

The simplicity of single-level living meets stylish, high-end finishes in this light-filled 3 bedroom, 2.5 bathroom home. Options for personalization abound, including a lower level equipped with rough-in plumbing and ready to be finished if you crave more space. This comfortable, high-performing home plan can be customized to meet your needs – whatever those may be.



### MAIN LEVEL

- 1 - Kitchen
- 2 - Dining
- 3 - Living
- 4 - Owner's Suite
- 5 - Owner's Bath
- 6 - Bedroom 2
- 7 - Bath 2
- 8 - Study/Bedroom 3
- 9 - Powder
- 10 - 2-Car Garage
- 11 - Owner's Entry
- 12 - Laundry
- 13 - Patio (Optional Trellis or Roof)
- 14 - Entry Porch



### OPTIONAL FINISHED LOWER LEVEL

- 1 - Rec Room
- 2 - Wet Bar
- 3 - Bedroom 4
- 4 - Bedroom 5
- 5 - Bedroom 6
- 6 - Bath 3
- 7 - Utility

### 2000 Oasis Mid Century Modern

Main Level	1,881 SQFT
Finished Lower Level	87 SQFT
<b>Total Finished</b>	<b>1,968 SQFT</b>
Unfinished Lower Level	1,334 SQFT
<b>Total</b>	<b>3,302 SQFT</b>

We reserve the right to modify or change plans, specifications, features and prices without notice. Renderings are artist's concepts. Window size & location may vary per elevation style.