



## Roz Piñon

Sales Manager

Roz@markelhomes.com

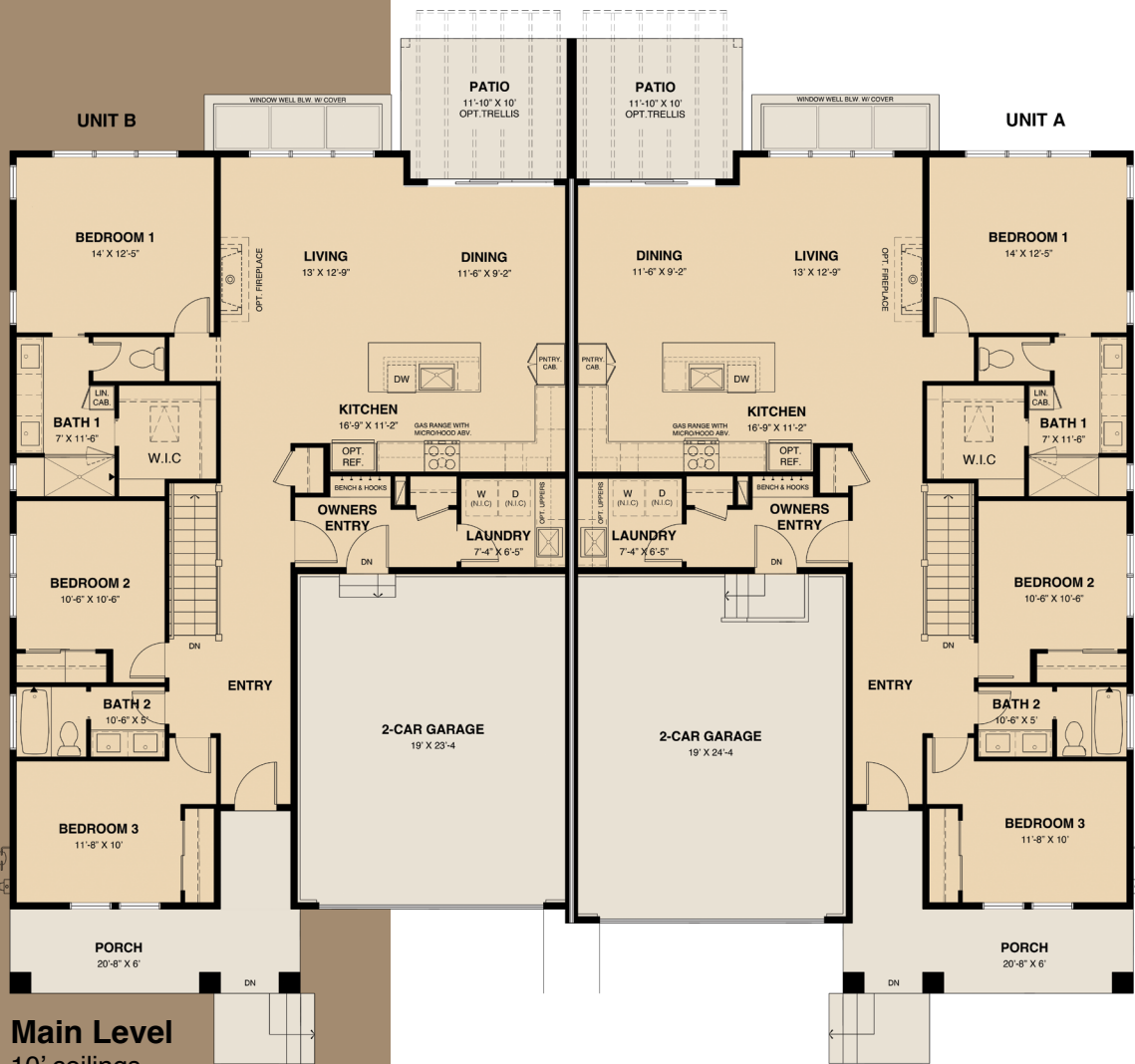
(720) 583-2170

Marketed by  MarkelHomes

## 1600 Ranch Front Load Duplex

Here's a home as fun to live in as it is great to look at. The open plan, abundant natural light, and design features Markel Homes is known for come together to offer single level living at its finest. Entertain with ease at the large island, serve cocktails around the gas fireplace, or move to the patio for summer evening stargazing. With the owner's suite plus two bedrooms and two baths on the main floor, you can offer guests their privacy (and keep yours). Now or down the road, get creative with the flex space in the plumbed, unfinished lower level with large window wells and generous ceiling height.

- Open living, dining, and kitchen with EVP or vinyl flooring, pendant lighting above the central island, and sliding glass doors to outdoor living.
- Kitchen equipped with stainless steel appliances, quartz countertops, gas range with micro hood, under-mount sink, and handy pantry cabinet.
- Owner's suite with 4-piece bath with soft natural light, dual sink vanity, privacy toilet, shower with bench, linen cabinet in bath, and walk-in closet.
- Step from the attached 2-car garage into the owner's entry with coat closet and bench with hooks adjacent to the main floor laundry room.
- Enjoy the cost-saving advantages and comforts of advanced energy technology in your high performing home.



**Main Level**  
10' ceilings  
Vaulted where indicated



**Unfinished Lower Level**  
8' 7" ceilings

### 1600 Ranch Front Load Duplex

Main Level*	1,595 sq. ft.
Finished Lower Level	64 sq. ft.
<b>Total Finished</b>	<b>1,659 sq.ft</b>
Unfinished Lower Level	1,078 sq. ft.
<b>Total</b>	<b>2,737 sq. ft.</b>

We reserve the right to modify or change plans, specifications, features and prices without notice. Renderings are artist's concepts. Window size & location may vary per elevation style.